

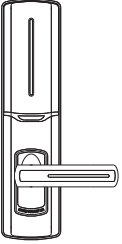

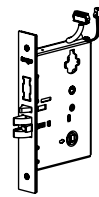
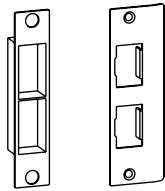


USER MANUAL OF FINGERPRINT DOOR LOCK

Thanks to use our fingerprint lock.
Please read the manual carefully before use.
Please keep well this manual for future query.
To know more about our new products or service, please contact with us directly.



■ Packing List |

Please check the packing before use.

 <p>Front Panel</p>	 <p>Back Panel</p>	 <p>Mortise</p>
 <p>Buckle/Plastic box</p>	 <p>Cylinder/Key</p>	 <p>Screws/Tool</p>

■ Please Read the Manual |

- Any change submit to our confirmation.
- Any error or question in the manual, please feel free to contact us.
- It is forbidden to copy our manual and for other usage, except the authorized company and users.
- For any wrong operation or installation to the user or third party, We does not responsible for the duty.
- For the damage caused by anthropic factor or inevitable reason, We does not pay the loss or maintain for free, please check our after sale service terms.
- Please do not take apart the lock if you are not technician, if necessary, please make the operation under the guide of technician.
- Notice: There is maybe a little difference for product pictures with real goods, please subject to our real products.
- After changing the battery, please do not throw away them , kindly refund to recycle bin in case of pollution!

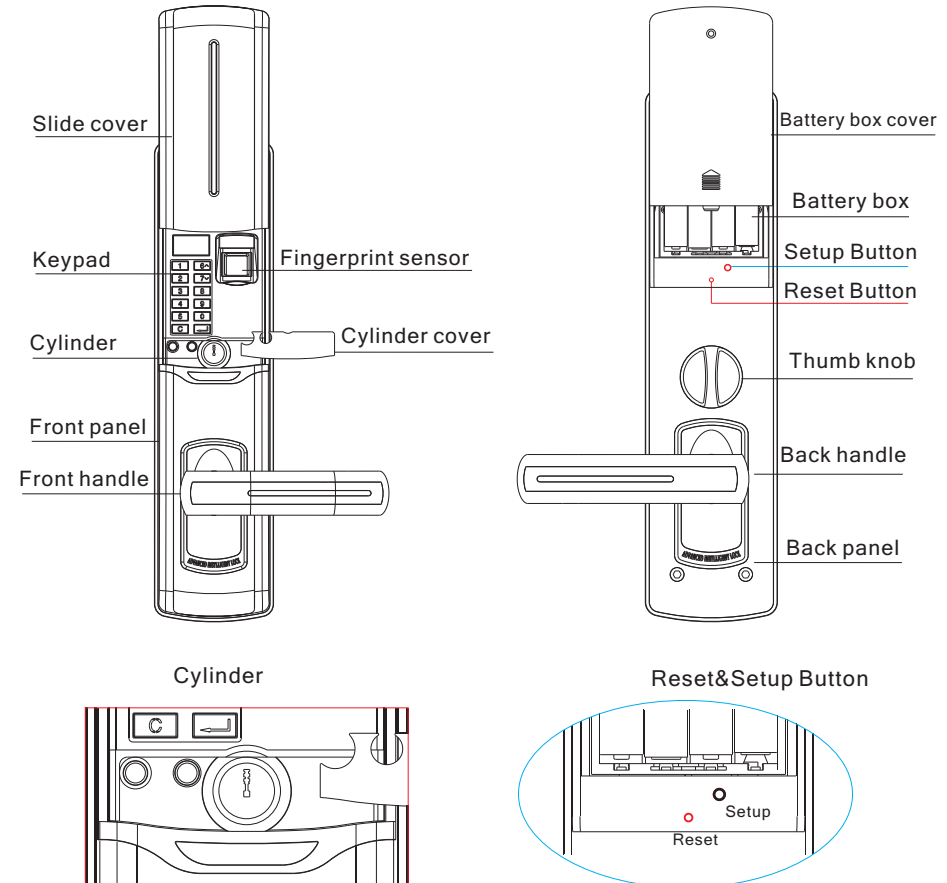


Phase 1 Summarization

Technical Parameters

Fingerprint Sensor:	Optical sensor, blue window/360 degree recognition
Password:	20 groups
Master Fingerprint:	3pcs
User Fingerprint:	97pcs
Resolution:	500DPI
Reading Speed:	<1S
Static Current:	<25uA
Working Voltage:	DC4.5V~6v, 4pcs AA batteries
Battery Life:	15000 times
Working Temperature:	-20-55 degree
Unlock way:	Touch the fingerprint to the window or enter right password, the blue light flash one time with one sound, turn the handle to open the door.
	if you do not open, it will lock after 5 seconds automatically.
	if the power is less than 4.8v, there are 3 sounds for tip. you can still open 10 times. if it is less than 4.5v, you can not open the door any more.
Low voltage alarm:	

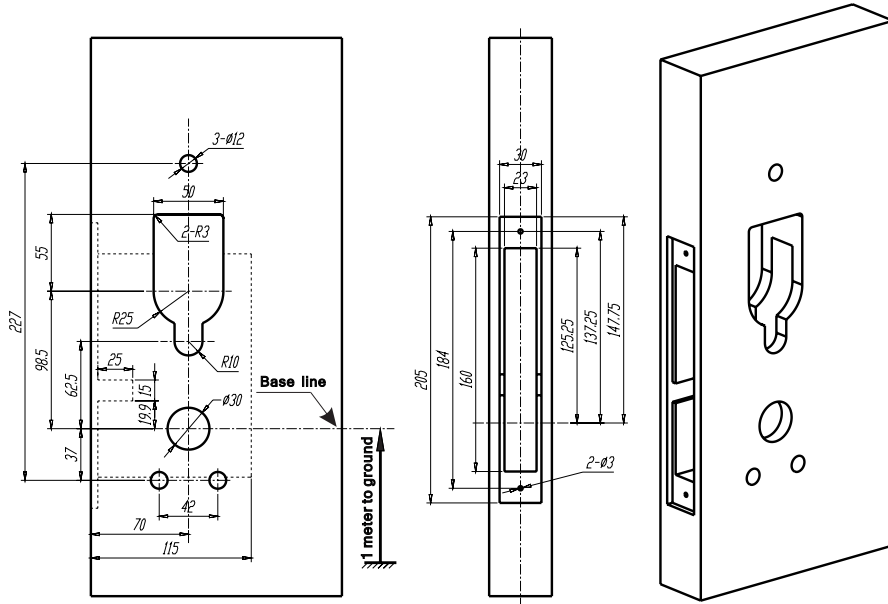
Lock Description:



Phase 2 Installation Guide

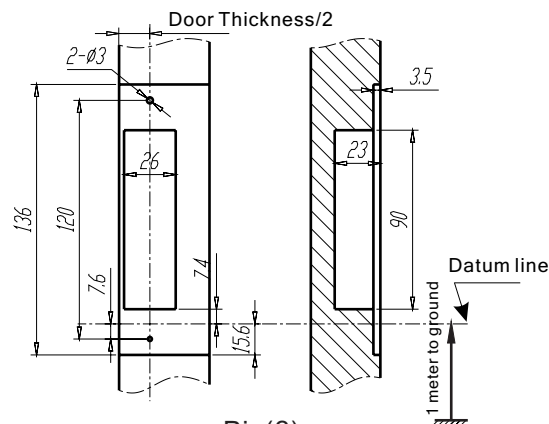
1. Drill the Hole

We suggest you making the hole under the guide with manufacturer and the door factory, to avoid the mistake or damage to the doors.



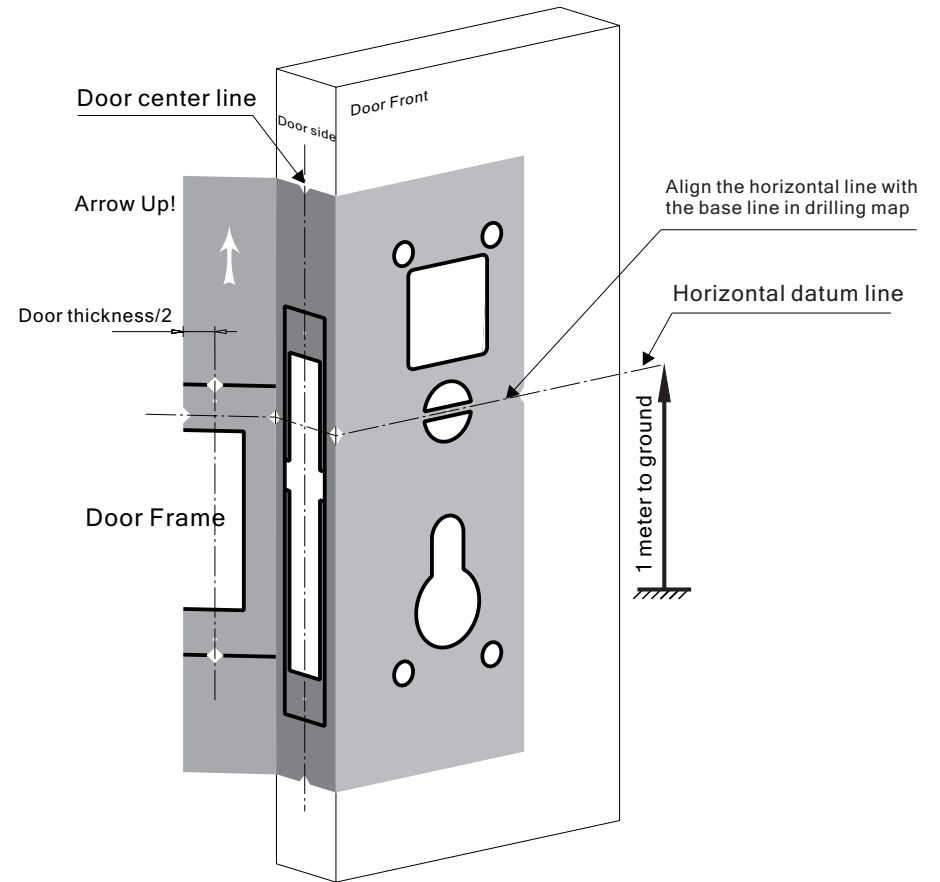
Pic(1)

2. Door frame drilling diagram



Pic(2)

3. Drill the hole: see the pic(3), please first draw one horizontal base line in the position of 1 meter to the ground, align the base line in the drill drawing with the drawn line and make the hole as the picture shows:



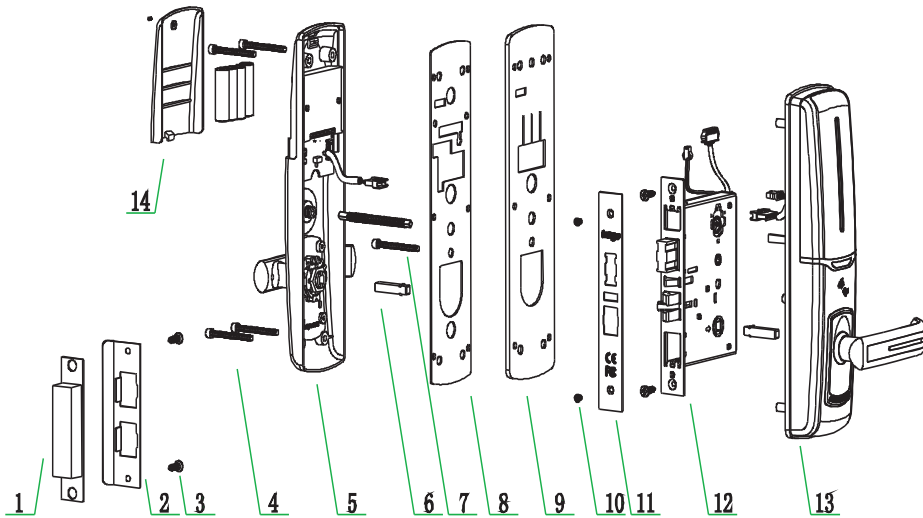
Pic(3) Drilling Sketch Map

4. Drill door frame: please drill the hole in the door frame as drawing. It is better to ask the technician to make the hole.

II. Door Lock Assembly

There are 3 steps for the mortise, cylinder and panel. please follow our instruction or the guide of technician.

1. Exploded View of Assembly

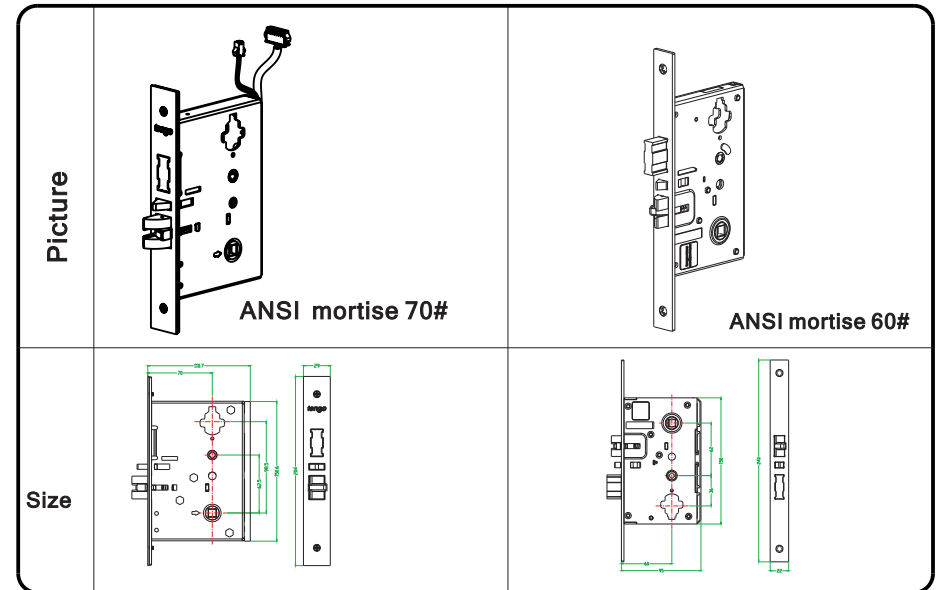


Pic(4) Assembly Exploded View

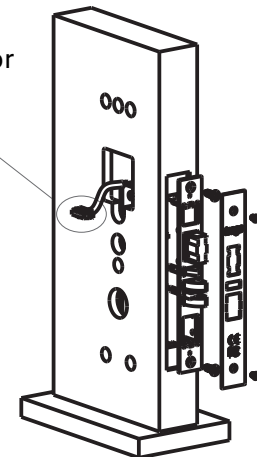
No.	Name	Qty.	No.	Name	Qty.
①	Buckle box	1	⑧	Steel protector	1
②	Buckle	1	⑨	Rubber gasket	1
③	ST4x20 Cross sunk self-tapping screw	4	⑩	M4x6 Cross sunk crew	2
④	M5xN Hexagon socket-cap -screw	3	(11)	Side plate	1
⑤	Back panel	1	(12)	Mortise	1
⑥	Small latch	3	(13)	Front panel	1
⑦	M5x40 Hexagon socket-cap -screw	2	(14)	Battery box	1

2. Install Mortise

There are 2 types of mortises to use for different choice. And different for left/right direction. Draw out the 8P connector out of the hole and fix the screws as below.

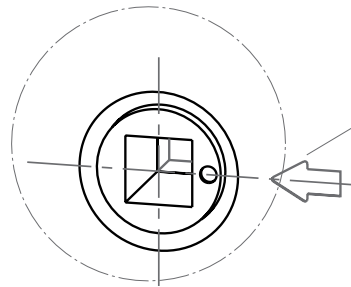


Draw out the connector from the hole



Pic(5) Install Mortise

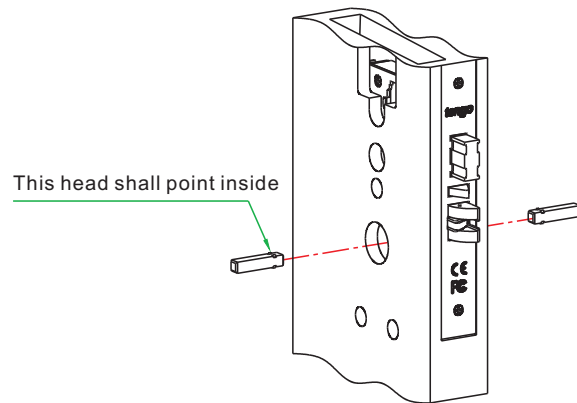
2. Fix the Latch Bolt(Pic6)



Pic(6) Dot/Arrow

Remark: dot in the spindle shall align with the arrow in the mortise.

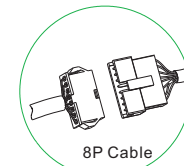
Fix latch in front and back, check pic(7).



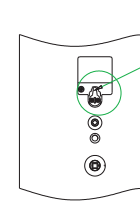
Pic(7) Install Latch

3. Fix the Front Panel(Refer Pic8/9/10/11)

- 3.1 Connect the 8P cable as Pic4 on the front panel.
- 3.2 Align the latch bolt with handle hole. align the cylinder wing with the cylinder hole as Pic9 on the front panel. And fix them on the door as Pic10.
- 3.3 Align the PU cover and back panel cover and fix with screws as Pic11.



Pic8



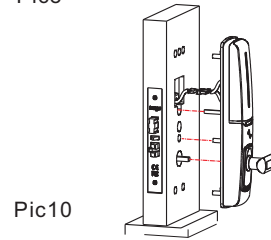
Cylinder wing shall be up, or the key cannot open the door

Pic9

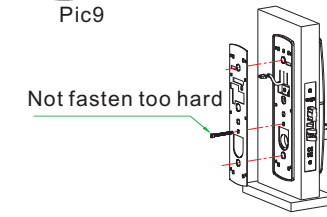


Cylinder wing insert cross this square hole

(4:1)



Pic10

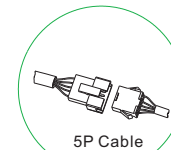


Not fasten too hard

Pic11

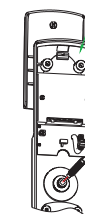
4. Fix the Back Panel(Refer Pic12/13/14/15)

- 4.1 Insert the small latch into the handle hole of back panel. Connect the 5P cable as Pic 12.13
- 4.2 Align the big latch bolt with the handle hole, align the knob with the hole of mortise. Fasten the screws and fix the panel as Pic 14.
- 4.3 Put batteries inside and fix the screws as Pic15.
- 4.4 Adjust the lock panel to make sure it is in right position.



5P Cable

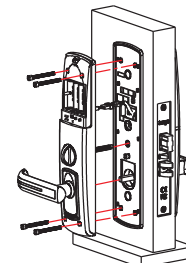
Pic12



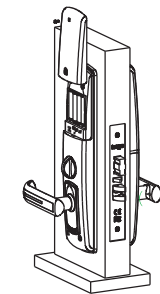
Remove the battery box cover when put batteries.

Pic13

Insert the small latch into the handle hole of back panel



Pic14



Pic15

Pic(10) Install Back Panel

Phase 3 Operation Setting

Function Description

1.Factory State

Under factory state, there is no fingerprint memory inside, any fingerprint can open the door,after you set the master fingerprint, this function will be invalid.

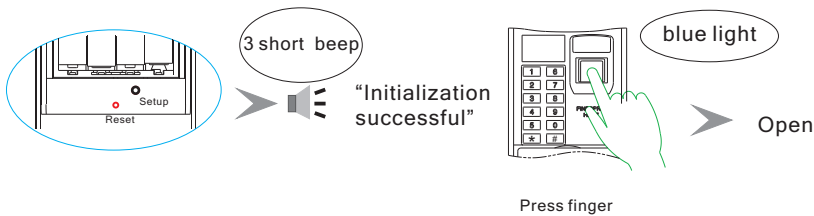
2.Factory password: 123456,only available under factory state, after set the new password, the factory password will be invalid.

3.User fingerprint: to open the door include the dead locking door.

3.1 Initialization :

Press the RESET button and hold for 3 seconds, there is three short beeps (di-di-di) and there is one sound tip "Initialization Successful". Then the lock is under the initialization state, there is no any fingerprint or password inside the lock.

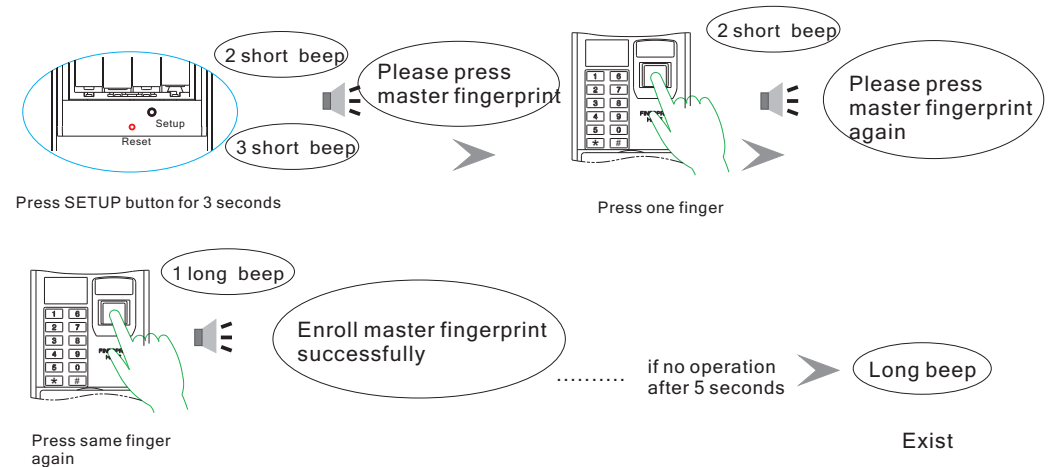
Then the lock is under factory state, any fingerprint can open the lock.



3.1 Enroll Master Fingerprint

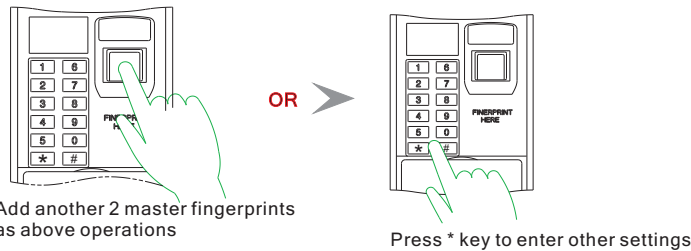
Press the SETUP button and hold for 3 seconds, there is two short beeps and then three beeps . (di---di---di-di-di).

1.When there is no master fingerprint memory or master fingerprint is not full inside the lock, there is sound tip "Please press master fingerprint"-(then press one finger on the sensor windows)-"Please press master fingerprint again"--(then press same one finger on the sensor windows again), if operation is right, there is sound tip "Enroll master fingerprint successfully". If press the wrong finger on the second time, there is sound tip "please enter again, please press master fingerprint". If there is no operation, the lock will repeat the tip "please enter again, please press master fingerprint", the third time for sound tip is "Please enter again", if still no operation, the lock will exit the setting master fingerprint.



If you enroll the first master fingerprint successfully, you can continue the same operation to enroll the left two master fingerprints or you can press * key to exit the setting of master fingerprint; if you press the # key to enter the detail settings, there is sound tip

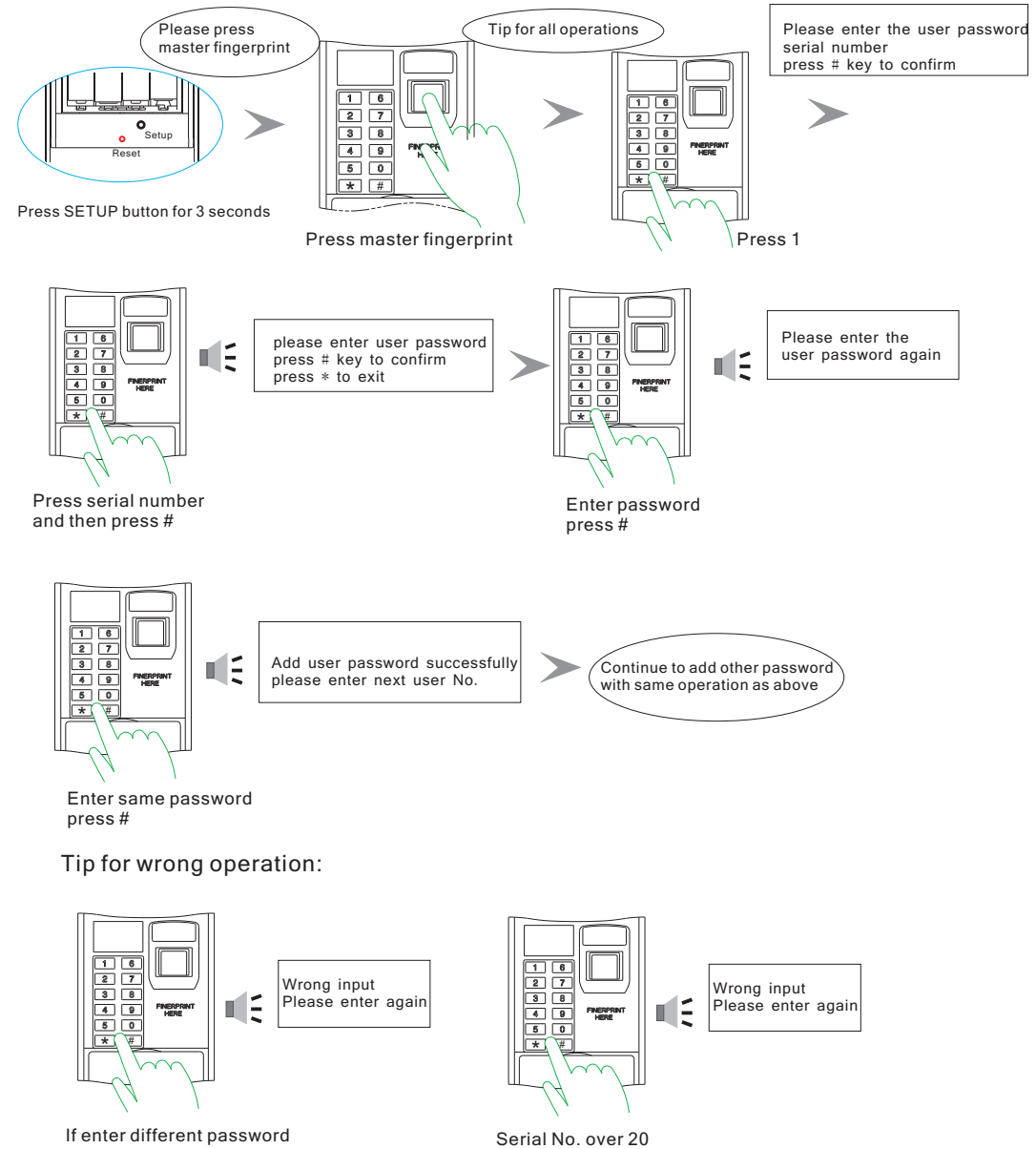
- Add user password press 1
- add user fingerprint press 2
- delete single user password press 3
- delete single user fingerprint press 4
- delete all user password press 5
- delete all user fingerprint press 6



If the fingerprint is full(3pcs). There is tip "Please press master fingerprint"-(then press one finger on the sensor windows) - there is sound tip:

- Add user password press 1
- add user fingerprint press 2
- delete single user password press 3
- delete single user fingerprint press 4
- delete all user password press 5
- delete all user fingerprint press 6

Normally, you can add the user password like below steps:



3.2 Add User Fingerprint

Press the SETUP button and hold for 3 seconds, there is two short beeps and then three beeps. (like di---di---di-di-di).

If the master fingerprint are full. There is tip "Please press master fingerprint"-(then press one finger on the sensor windows) – there is sound tip

"Add user password press 1

add user fingerprint press 2

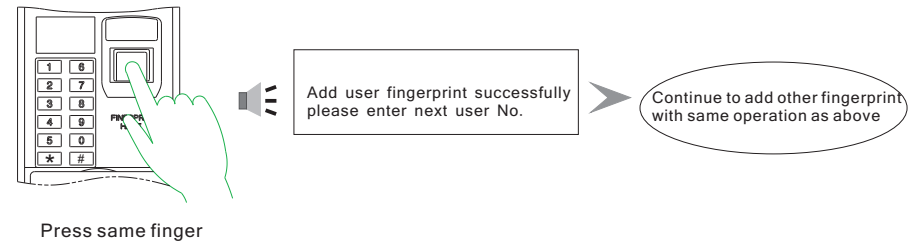
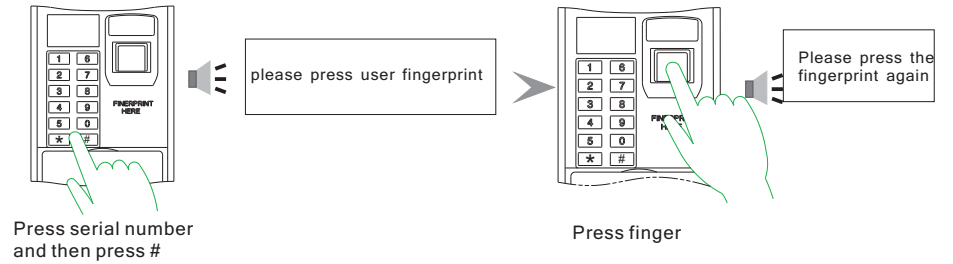
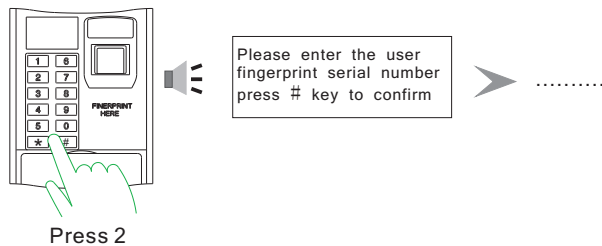
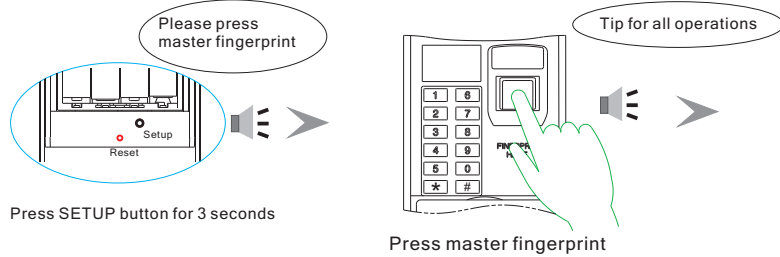
delete single user password press 3

delete single user fingerprint press 4

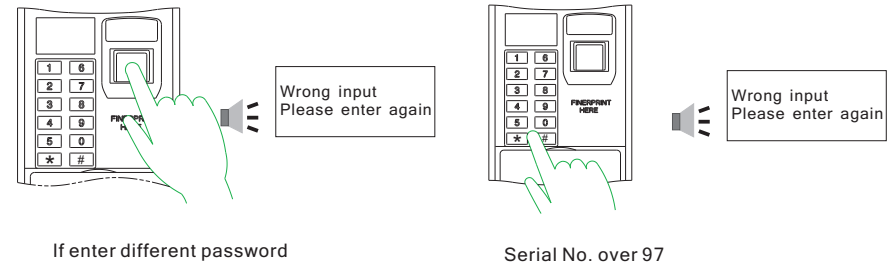
delete all user password press 5

delete all user fingerprint press 6

Please press 2 to add the user fingerprint. There is sound tip "Please enter the user fingerprint serial number. press # key to confirm." then enter the serial number(1-97), such as 01, and press # key to confirm, the sound tip " please enter user fingerprint ", then press one finger on the sensor as you like, there is sound tip " Please press the user fingerprint again". Then enter the same finger and there is one long sound with tip " Add user fingerprint successfully, please enter next user No. ", you can continue to add the next user fingerprint, total 97 user fingerprints.



Tip for wrong operation:



3.3 Delete Single User Password

Press the SETUP button and hold for 3 seconds, there is two short beeps and then three beeps . (di---di---di-di-di).

If the master fingerprint are full. There is tip "Please press master fingerprint"-(then press one finger on the sensor windows) – there is sound tip

Add user password press 1

add user fingerprint press 2

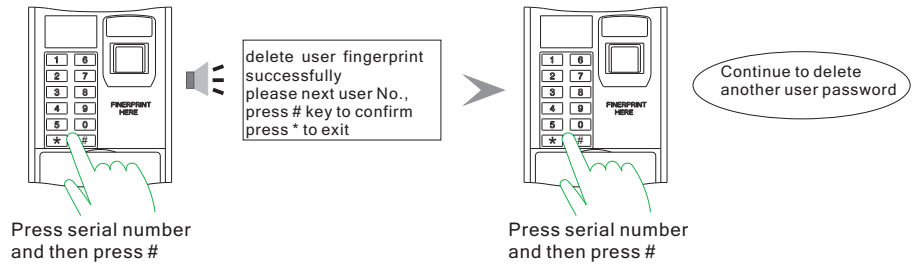
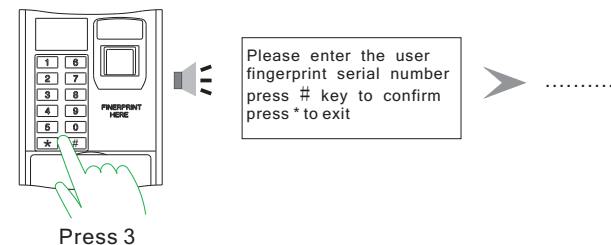
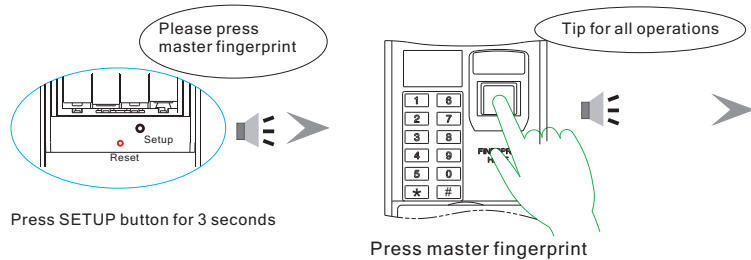
delete single user password press 3

delete single user fingerprint press 4

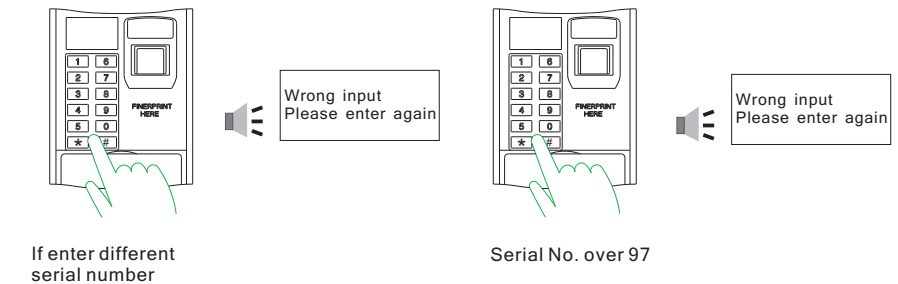
delete all user password press 5

delete all user fingerprint press 6

Please press 3 to delete the single user password. There is sound tip "Please enter the user password serial number. press # key to confirm, press * to exit. " then enter the serial number(1-20), such as 01, and press # key to confirm, there is sound tip "Delete user password successfully, please enter next user No. , press # key to confirm, press * to exit ", you can continue to delete the next user password.



Tip for wrong operation:



3.4 Delete Single User Fingerprint

Press the SETUP button and hold for 3 seconds, there is two short beeps and then three beeps. (like di---di---di-di-di).

If the master fingerprint are full. There is tip "Please press master fingerprint"-(then press one finger on the sensor windows) – there is sound tip

"Add user password press 1

add user fingerprint press 2

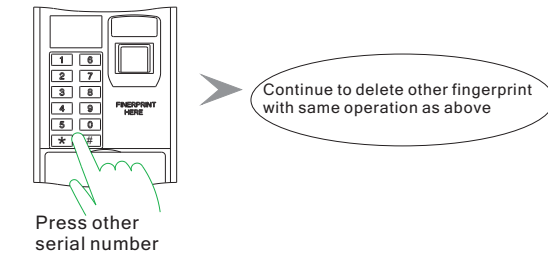
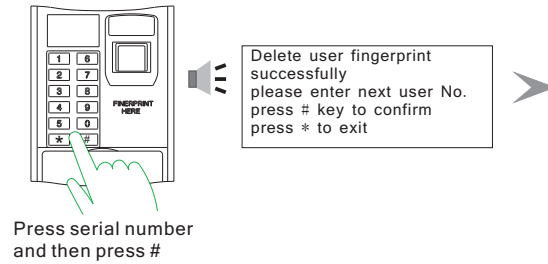
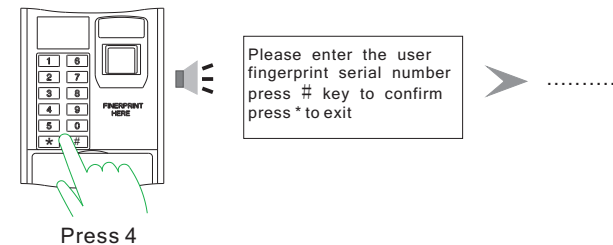
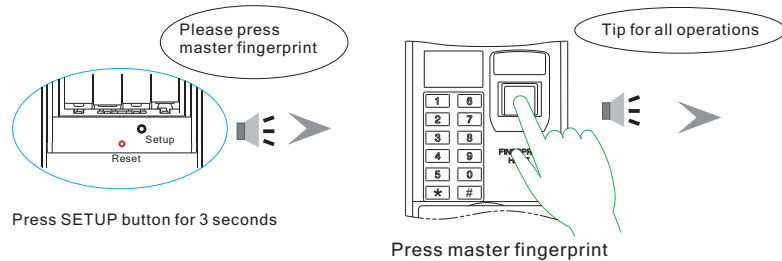
delete single user password press 3

delete single user fingerprint press 4

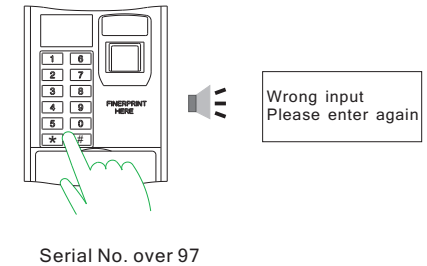
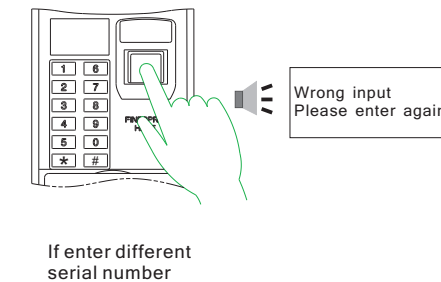
delete all user password press 5

delete all user fingerprint press 6

Please press 4 to delete the single user fingerprint. There is sound tip "Please enter the user fingerprint serial number. press # key to confirm, press * to exit. " then enter the serial number(1-97), such as 01, and press # key to confirm, there is sound tip "Delete user fingerprint successfully, please enter next user No. , press # key to confirm, press * to exit ", you can continue to delete the next user fingerprint.



Tip for wrong operation:



3.5 Delete All User Password

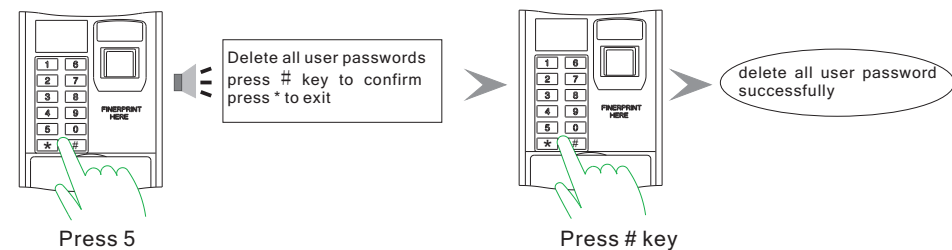
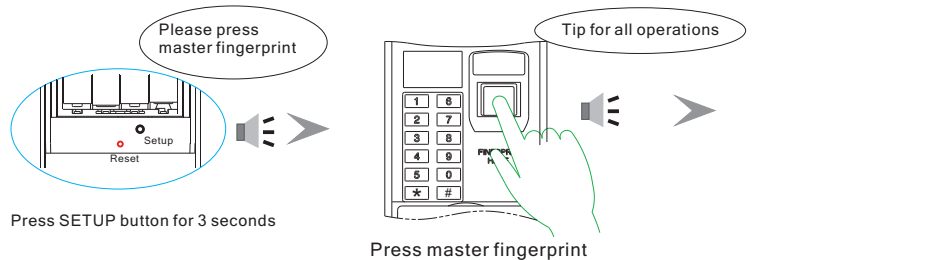
Press the SETUP button and hold for 3 seconds, there is two short beeps and then three beeps . (di---di---di-di-di).

If the master fingerprint are full. There is tip "Please press master fingerprint"-(then press one finger on the sensor windows) – there is sound tip

- Add user password press 1
- add user fingerprint press 2
- delete single user password press 3
- delete single user fingerprint press 4
- delete all user password press 5
- delete all user fingerprint press 6

Please press 5 to delete all the user password. There is sound tip "Delete all user passwords,press # key to confirm, press * to exit. "you can press # key, then you can press # key to confirm, there is sound tip" Delete all user password successfully".

Then there is sound tip again "Add user password press 1 , add user fingerprint press 2, delete single user password press 3, delete single user fingerprint press 4, delete all user password press5 , delete all user fingerprint press 6". You can choose the operation as you like.



3.6 Delete All User Fingerprints

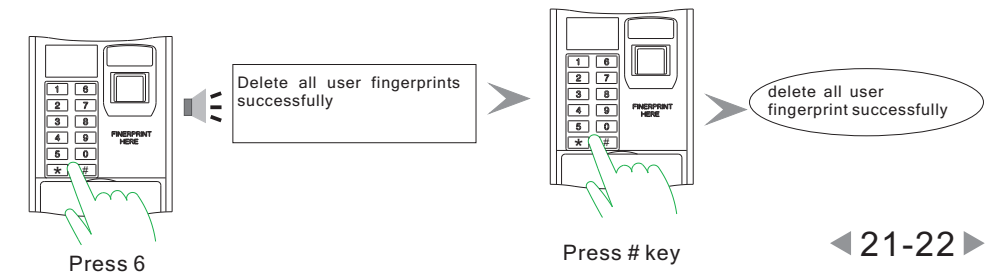
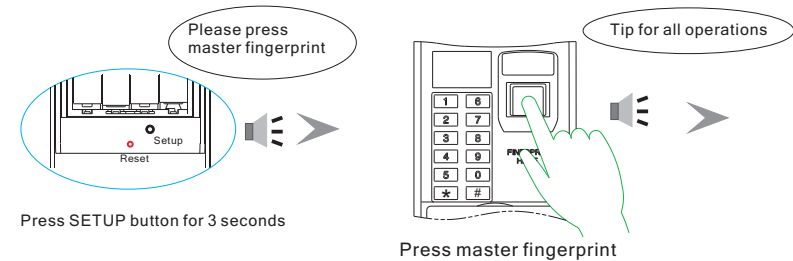
Press the SETUP button and hold for 3 seconds, there is two short beeps and then three beeps . (like di---di---di-di-di).

If the master fingerprint are full. There is tip "Please press master fingerprint"-(then press one finger on the sensor windows) – there is sound tip

- "Add user password press 1
- add user fingerprint press 2
- delete single user password press 3
- delete single user fingerprint press 4
- delete all user password press 5
- delete all user fingerprint press 6

Please press 6 to delete the single user fingerprint. There is sound tip "Please enter the user fingerprint serial number. press # key to confirm, press * to exit. "you can press # key to confirm, there is sound tip" Delete all user fingerprints successfully".

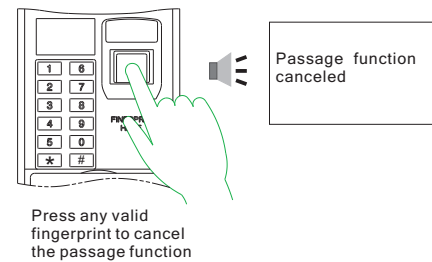
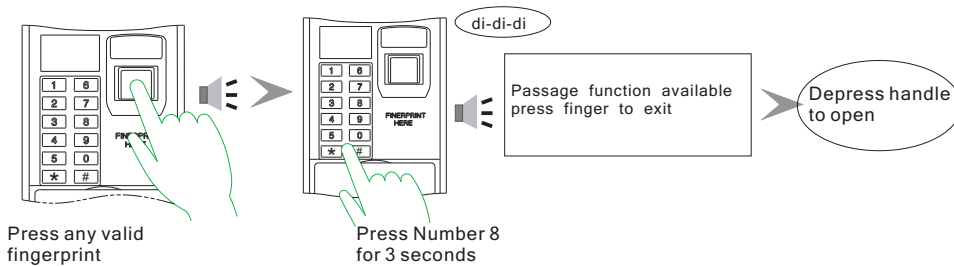
Then there is sound tip again "Add user password press 1 , add user fingerprint press 2, delete single user password press 3, delete single user fingerprint press 4, delete all user password press5 , delete all user fingerprint press 6". You can choose the operation as you like.



4. Always Open Function

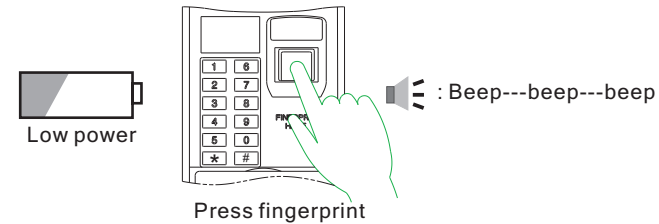
When it is under meeting or group action, you can set the lock as passage function (always open state). Then you can open the door directly without pressing fingerprint or entering password.

Setting: open the door with any valid fingerprint, then press number 8 for 3 seconds, there is sound tip "di-di-di", then there is tip "Passage function available, press finger to exit", then you can turn the lock handle and open directly.



When the battery power is less than 4.8v, there is 3 long beeps when you press the fingerprint on the sensor windows. You can still open about 50 times. Please change the battery in time.

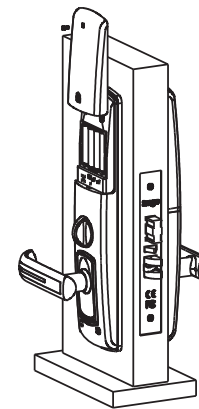
Usually the battery can last for one year up to the using frequency and conditions.



when the power is low: there is di-di-di beep with red light flash then green light. then you need to change battery in time. the way to change battery is as below:

Warm tip: the lock shall use alkaline battery! or it will cause failure of lock. Please refer the below picture to change the battery.

Notice the anode and cathode of battery to avoid the damage to the PCB.



☀ 4pcs AA Alkaline batteries

please do not throw away them

kindly refund to recycle bin in case of pollution!

